

UTILITY SHELVING

Vertical Drying and Storage Rack

Promotes sanitary drying, safe handling and efficient storage for trays, sheet pans, cutting boards and lids. Can be used with Shelf Rails to prevent contents from sliding off.

Units ship complete with factory assembled mobile post kits, 6 traverses, 12 or 15 vertical drying cradles and premium swivel casters with total locking brake. Assembly required.



Modular 7-slot rack can be ordered separately to customize a drying and storage rack. Made of highly durable ABS plastic. Slots are spaced 1 5/16" wide and dividers are 2 1/2" high.



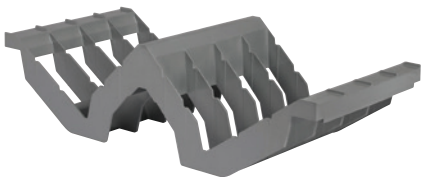
CODE	DIMENSIONS D x L x H	HOLDING CAPACITY	CASE PACK	LIST PRICE EA.
Premium Series Vertical Drying and Storage Rack				
CPMU244875DRPKG	24" x 48" x 75"	84 Trays	1	\$ 1,895.00
CPMU246075DRPKG	24" x 60" x 75"	105 Trays	1	2,130.00
Vertical Drying and Storage Cradle for 24" deep shelf only (Fits all Camshelving® lines)				
CSDR7	23 1/2" x 10 1/4" x 3 3/4"	—	1	75.25
CSDR73	23 1/2" x 10 1/4" x 3 3/4"	—	3	226.00

Drying Rack Color: Speckled Gray (480). **Drying Cradle Color:** Soft Gray (151).
48" long unit ships in 5 boxes. 60" long unit ships in 6 boxes.

Angled Drying and Storage Rack

Promotes sanitary drying, safe handling and efficient product organization with easy access to product.

Unit ships complete with factory assembled mobile post kits, 8 traverses, 16 angled drying cradles and premium swivel casters with total locking brake. Assembly required.



Uniquely designed cradle holds up to 8 each meal delivery pellets or use to dry, store and transport food pans and other commercial kitchen ware. Installs directly onto shelf traverses. Made of highly durable ABS plastic. Slots are spaced 2 3/8" apart.



CODE	DIMENSIONS D x L x H	HOLDING CAPACITY	CASE PACK	LIST PRICE EA.
Premium Series Angled Drying and Storage Rack				
CPMU244875PDPKG	24" x 48" x 75"	128 Pellets and Bases or 16 GN 1/1 Food Pans	1	\$ 2,220.00
Angled Drying and Storage Cradle for 24" deep shelf only (Fits all Camshelving® lines)				
CSDR8	23 5/16" x 10 5/8" x 6 5/16"	—	1	60.50
CSDR84	23 5/16" x 10 5/8" x 6 5/16"	—	4	242.00

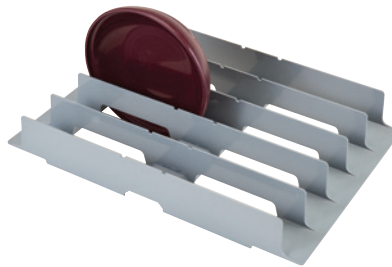
Drying Rack Color: Speckled Gray (480). CPMU244875PDPKG Ships in 5 boxes.
Drying Cradle Color: Soft Gray (151).

UTILITY SHELVING

Dome Drying and Storage Rack

Promotes sanitary drying, safe handling and efficient product organization with easy access to product.

Unit ships complete with factory assembled mobile post kits, 10 traverses, 10 dome drying cradles and premium swivel casters with total locking brake. Assembly required.



Use to dry and safely store up to 10 patient meal delivery domes or plate covers upright. Installs directly onto shelf traverses. Made of highly durable ABS plastic. Slots are spaced 3/16" apart.



CODE	DIMENSIONS D x L x H	HOLDING CAPACITY	CASE PACK	LIST PRICE EA.
Premium Series Dome Drying and Storage Rack				
CPMU243675DDPKG	24" x 36" x 75"	100 Domes	1	\$ 1,950.00
Dome Drying and Storage Cradle for 24" deep shelf only (Fits all Camshelving® lines)				
CSDDC24	24" x 16½" x 3⅜"	—	1	87.50
CSDDC245	24" x 16½" x 3⅜"	—	5	434.00
Drying Rack Color: Speckled Gray (480). CPMU243675DDPKG Ships in 3 boxes.				
Drying Cradle Color: Soft Gray (151).				

Elements® XTRA Series 2-Shelf Vented Undercounter Units

Create storage in underutilized or hard-to-reach undercounter areas. Ideal for storing condiments, to-go containers, and paper disposables. Stationary units include 2 factory assembled stationary post kits, 4 stationary traverses, stationary traverse dovetails and shelf plates.

Mobile units include 2 factory assembled mobile post kits, 4 mobile traverses, mobile traverse dovetails, shelf plates, and 4 premium swivel casters with total locking brake.



CODE	DIMENSIONS D x L x H*	LIST PRICE EA.
Stationary Units		
EXU183630V2	18" x 36" x 30"	\$ 397.00
EXU184830V2	18" x 48" x 30"	440.00
Mobile Units		
EXMU142427V2	14" x 24" x 27¼"	670.00
EXMU143627V2	14" x 36" x 27¼"	755.00
EXMU144827V2	14" x 48" x 27¼"	800.00
Color: Brushed Graphite (580). Ships in 1 box. *Height includes casters.		

Camshelving® Wine Rack

Full Wine Rack Units & Kits

- > Unit holds up to 144 bottles.
- > Add kits to customize existing shelving.
- > Holds standard size wine bottles.
- > Available in 14" or 18" depth.

Easy to Clean
Ultra Hygienic
Highly Durable

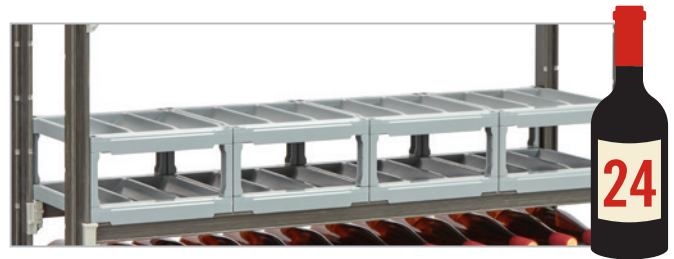


COMPONENTS
(WINE CRADLES &
CONNECTORS NOT
INCLUDED)

UTILITY SHELVING — CAMSHELVING® WINE RACK UNITS & KITS



Four Cradle Shelf Kits, Single Stack



Eight Cradle Shelf Kits, Double Stack



Twelve Cradle Shelf Kits, Triple Stack



Single Cradle Add On Kits

Camshelving® Wine Rack Units

CODE	DESCRIPTION	DIMENSIONS	HOLDING CAPACITY	LIST PRICE EA.
CPUWR144872	Premium Series Stationary Wine Rack Unit	14" x 48" x 72"	144 Standard Bottles of Wine (750 ml)	\$ 2,175.00
EXUWR144872	Elements XTRA Stationary Wine Rack Unit	14" x 48" x 72"	144 Standard Bottles of Wine (750 ml)	1,860.00

Color: Speckled Gray (480). Each UNIT includes: 2 Factory Assembled Post Frames, 8 Traverses, 48 each Wine Cradles, 32 Bags of Cradle Connectors.

Camshelving® Wine Cradle Kits

CODE	DESCRIPTION	DIMENSIONS D x W x H*	HOLDING CAPACITY	LIST PRICE EA.
Single Cradle Add On Kits (Single Cradle with Bag of Connectors)				
CSWRKIT14P1	Wine Cradle Kit 14" Deep 1PK	13.28" x 11.16" x 1.5"	3 Bottles	\$ 44.25
CSWRKIT18P1	Wine Cradle Kit 18" Deep 1PK	17.28" x 11.16" x 1.5"	3 Bottles	50.45
Four Cradle Shelf Kits, Single Stack (Four Cradles, No Connectors)				
CSWRC14P4	Wine Cradles Only 14" Deep 4 EA	13.28" x 44.64" x 1.5"	12 Bottles	120.00
CSWRC18P4	Wine Cradles Only 18" Deep 4 EA	17.28" x 44.64" x 1.5"	12 Bottles	145.00
Eight Cradle Shelf Kits, Double Stack (Eight Cradles with 4 Bags of Connectors)				
CSWRKIT14P8	Wine Cradle Kit 14" Deep 8PK	13.28" x 44.64" x 6.3"	24 Bottles	250.00
CSWRKIT18P8	Wine Cradle Kit 18" Deep 8PK	17.28" x 44.64" x 6.3"	24 Bottles	295.00
Twelve Cradle Shelf Kits, Triple Stack (Twelve Cradles with 8 Bags of Connectors)				
CSWRKIT14P12	Wine Cradle Kit 14" Deep 12PK	13.28" x 44.64" x 11.26"	36 Bottles	375.00
CSWRKIT18P12	Wine Cradle Kit 18" Deep 12PK	17.28" x 44.64" x 11.26"	36 Bottles	440.00

Color: Soft Gray (151). *Overall length is based on 4 cradles installed side by side along 48" traverses.

Cradle Kits fit all Camshelving lines — Premium Series, Elements XTRA Series, and Basics Plus Series.

Optional Accessories

CODE	DESCRIPTION	DIMENSIONS D x L x H	LIST PRICE EA.
CSFF	Floor Fastener	1.5" x 6.5" x 3.75"	\$44.35
CSWF	Wall Fastener	2.9" x 3.4" x 1.9"	43.15
CSDS14H6	Dunnage Stand	14" x 6.5"	69.00
CSID6	Identification Tag	6" x 1"	3.00
CSID3	Identification Tag	3" x 1"	3.00

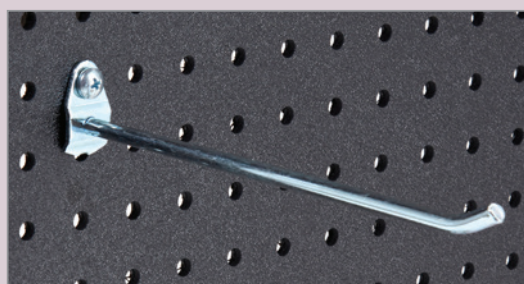
Colors: Floor and Wall Fastener Stainless Steel (000), Dunnage Stand Speckled Gray (480), Identification Tags White/Clear (000)).

CAMSHELVING®

PEGBOARD STORAGE SYSTEM

STRONG

Heavy-duty, commercial
grade plastic



Unique double locking, 6" straight
stainless steel pegboard hook
features bottom locking tab and
top stainless steel screw.

CSPEGKIT18

W 18" x H 48"

LIST PRICE EACH: \$ 370.00

CSPEGKITW

Wall Mount Kit

LIST PRICE EACH: \$ 45.75

CSPEGKIT21

W 21" x H 48"

LIST PRICE EACH: \$ 420.00

CSPEGH6

6" Peg Hooks (12 each)

LIST PRICE EACH: \$ 57.20

CSPEGKIT24

W 24" x H 48"

LIST PRICE EACH: \$ 470.00

CAMSHELVING® UNIVERSAL STORAGE RACK



HOLDS EVERYTHING
food pans, boxes, sheet pans, trays, and
even pizza dough boxes

A Unique Way to
**MAXIMIZE
SPACE**

Modular components,
rail panels + brackets = customizable storage.
Access top, middle or bottom items individually.



CREATE "DRAWER" STORAGE



VERTICAL STORAGE
between shelves
eliminates unused space



Premium® / Elements XTRA® Series

Basics® Plus Series

**21"
DEPTH**

CSUNVR21
LIST PRICE EACH: \$ 155.00
CSUNVRA21
LIST PRICE EACH: \$ 85.00

CBUNVR21
LIST PRICE EACH: \$ 155.00
CBUNVRA21
LIST PRICE EACH: \$ 85.00

**24"
DEPTH**

CSUNVR24
LIST PRICE EACH: \$ 165.00
CSUNVRA24
LIST PRICE EACH: \$ 90.00

CBUNVR24
LIST PRICE EACH: \$ 165.00
CBUNVRA24
LIST PRICE EACH: \$ 90.00

UTILITY SHELVING — CAMSHELVING® ULTIMATE #10 CAN RACK SYSTEM

Create the can storage system your operation needs with the Ultimate #10 Can Rack. This first ever plastic can rack makes storing and inventorying #10 and #5 cans so much easier.

- Front-loading, gravity-fed system supports FIFO organization and food rotation with no need to move the rack for loading or unloading.
- Made with easy to clean, smooth surfaces. Can be completely disassembled and run through the dishwasher.
- Lifetime warranty against rust and corrosion. Made from durable, reinforced plastic material.
- Single, Add-on Can Racks and Full-Size Can Rack Units each ship complete in 1 box. Units include pre-assembled post kits.

Color: Brushed Graphite (580).

Ultimate #10 Can Rack is covered by U.S. Patents D828,145 S and D827,421 S.

NSF Component on shelving only.



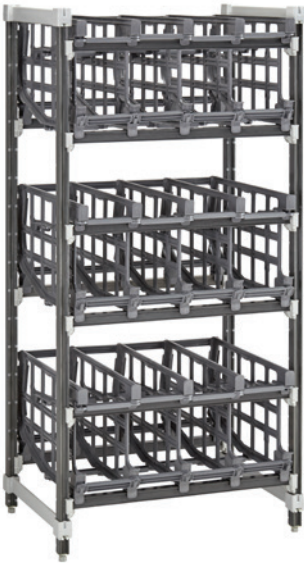
Full Size Stationary Can Rack Unit

This free-standing can rack holds up to 96 cans in a compact space. Install on the end of a Camshelving High Density unit for maximum space utilization. Ships knockdown in 1 box with 2 factory-assembled post kits.

Premium® Series



Elements® XTRA Series



Full Size Stationary Add-on Can Rack Unit

Maximize every inch of linear space in your kitchen or dry storage area with an in-line can rack. With just 1 factory assembled post kit, connect a can rack to standard shelving units in a straight line by sharing posts.



Storage Capacity

	#10 Can	#5 Can
SINGLE OR ADD-ON CAN RACK	8 each	12 each
FULL-SIZE CAN RACK UNIT (26" x 36" x 72", 3 tiers)	96	144

Holds #10 and #5 cans 6.7" to 7.07" tall.



UTILITY SHELVING — CAMSHELVING® ULTIMATE #10 CAN RACK SYSTEM



CODE	CPU243672C96*	EXU243672C96*	CPA243672C96**	EXA243672C96**
DESCRIPTION	Premium Series Full-Size Stationary Can Rack Unit (Free Standing)	Elements XTRA Series Full-Size Stationary Can Rack Unit (Free Standing)	Premium Series Full-Size Add-On Can Rack Unit (Shared Post)	Elements XTRA Series Full-Size Add-On Can Rack Unit (Shared Post)
DIMENSION D x L x H	26" x 36" x 72"	26" x 36" x 72"	26" x 34¼" x 72"	26" x 34" x 72"
LIST PRICE EACH	\$ 1,275.00	\$ 1,130.00	\$ 1,080.00	\$ 990.00

Case Pack: 1 Ships in 1 box. **Premium Series Color:** Speckled Gray (480). **Elements XTRA Series Color:** Brushed Graphite (580).

*Unit includes: 2 pre-assembled post kits, 9 traverses, 15 panels and 72 brackets. **Unit includes: 1 pre-assembled post kit, 9 traverses, 15 panels and 72 brackets.

Single and Add-on Can Racks



CODE	UCR10R8	UCR10AR8
DESCRIPTION	Single Can Rack, 2 panels and 6 brackets	Add-on Can Rack, 1 panel and 6 brackets
DIMENSION D x L x H	26" x 9¼" x 15½"	26" x 7¼" x 15½"
LIST PRICE EACH	\$ 144.50	\$ 84.75

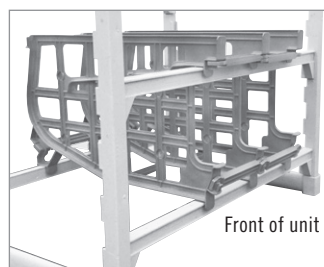
Case Pack: 1 **Color:** Brushed Graphite (580).



Can Racks Per Length

SHELF LENGTH	NUMBER OF CAN RACKS PER TIER*	LEFTOVER SHELF SPACE	#10 CAN HOLDING CAPACITY
24"	2	3.5"	16
30"	3	2"	24
36"	4	0"	32
42"	4	6.5"	32
48"	5	5"	40
54"	6	3.5"	48
60"	7	2"	56

*1 Single Rack plus Add-on Racks.



Front of unit

NOTE: Each tier of can racks requires 3 traverses, 2 front and 1 rear. Leave two open dovetails above top traverse before installing the next traverse/tier. This allows space to load cans.

CAMSHELVING® ULTIMATE SHEET PAN RACK

Designed for durability.
Buy once. Use forever.

Molded-in Rails =
No Broken Welds



Low maintenance,
Easy to clean.

Quiet, smooth glide,
swivel casters.
All with brake.



EASY TO
Assemble



CAMSHELVING® ULTIMATE SHEET PAN RACK

Full Size

Half Size

Undercounter

CODE	DIMENSIONS L x W x H*	RAIL SPACING	HOLDING CAPACITY	CASTER TYPE**	LIST PRICE EA.
Full Size Knockdown (KD) Units					
UPR1826FP20	33 $\frac{3}{8}$ " x 25 $\frac{1}{16}$ " x 72 $\frac{3}{8}$ "	3"	20 Sheet pans/trays	Plastic	\$ 1,000.00
UPR1826FP40	33 $\frac{3}{8}$ " x 25 $\frac{1}{16}$ " x 72 $\frac{3}{8}$ "	1 $\frac{1}{2}$ "	40 Sheet pans/trays	Plastic	1,015.00
Full Size Factory Assembled (FA) Units					
UPR1826FPA20	33 $\frac{3}{8}$ " x 25 $\frac{1}{16}$ " x 72 $\frac{3}{8}$ "	3"	20 Sheet pans/trays	Plastic	1,300.00
UPR1826FPA40	33 $\frac{3}{8}$ " x 25 $\frac{1}{16}$ " x 72 $\frac{3}{8}$ "	1 $\frac{1}{2}$ "	40 Sheet pans/trays	Plastic	1,380.00

Color: Brushed Graphite (580). *Dimensions include 5" plastic casters.

Weight capacity: 350 lbs. per rack, 55 lbs. per rail set.

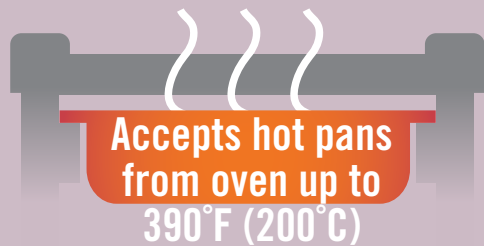
Half Size Knockdown (KD) Units					
UPR1826HP12	33 $\frac{3}{8}$ " x 25 $\frac{1}{16}$ " x 48"	3"	12 Sheet pans/trays	Plastic	735.00
UPR1826HP20	33 $\frac{3}{8}$ " x 25 $\frac{1}{16}$ " x 41 $\frac{5}{8}$ "	1 $\frac{1}{2}$ "	20 Sheet pans/trays	Plastic	800.00

Color: Brushed Graphite (580). *Dimensions include 5" plastic casters. **Weight capacity:** 175 lbs. per rack, 55 lbs. per rail set.

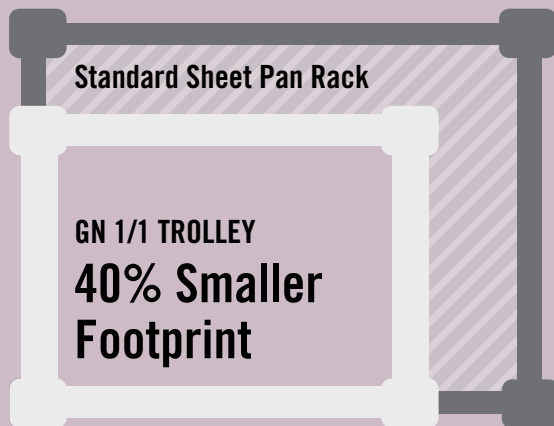
Undercounter Knockdown (KD) Units					
UPR1826U8	30 $\frac{7}{8}$ " x 23 $\frac{3}{4}$ " x 33 $\frac{3}{8}$ "	3"	8 Sheet pans/trays	Metal	650.00
UPR1826U15	30 $\frac{7}{8}$ " x 23 $\frac{3}{4}$ " x 31 $\frac{1}{2}$ "	1 $\frac{1}{2}$ "	15 Sheet pans/trays	Metal	710.00

Color: Brushed Graphite (580). *Dimensions include 3" metal casters. **Weight capacity:** 90 lbs. per rack, 55 lbs. per rail set.

CAMSHELVING® GN FOOD PAN TROLLEYS



Hold **MORE** Food Pans in **LESS** Space



Highly Durable

Low Maintenance

Quiet, smooth glide, swivel
casters. All with brake.



Use in Kitchen, Freezer or Cooler



**EASY TO
Assemble**

GN 1/1 Trolleys

1 full-size pan
per rail set, end load



UGNPR11H9
D 28¾" x L 17¼" x H 40"
LIST PRICE EACH: \$ 735.00
inStock item

UGNPR11F18
D 28¾" x L 17¼" x H 67½"
LIST PRICE EACH: \$ 980.00
inStock item

2½" x9

4" x4

2½" x18

4" x9

GN 2/1 Trolleys

2 full-size pans
per rail set, side load



UGNPR21H18
D 32⅞" x L 25⅝" x H 40"
LIST PRICE EACH: \$ 755.00

UGNPR21F36
D 32⅞" x L 25⅝" x H 67½"
LIST PRICE EACH: \$ 1,040.00

2½" x18

4" x8

2½" x36

4" x18



Unique top frame holds
a full size food pan or
cutting board. Use to
protect contents below
or create a light duty
work space.

PAN STOPS

Lock and secure pans on rails, especially during transport.

For Food Pan Trolleys

UGNPRPSF (Full Size)

LIST PRICE EACH: \$ 114.00

UGNPRPSH (Half Size)

LIST PRICE EACH: \$ 103.25

For Sheet Pan Racks

UPRPSF (Full Size)

LIST PRICE EACH: \$ 114.00

UPRPSH (Half Size)

LIST PRICE EACH: \$ 103.25

Store
Safe

FULL SIZE COVERS

Protect contents held/staged in kitchens, coolers, or freezers.

For Food Pan Trolleys

GBCTUGNPR11 (Vinyl)

L 26" x W 18 5/8" x H 60 7/8"

LIST PRICE EACH: \$ 179.00

GBCTUGNPR21 (Vinyl)

L 31" x W 26 3/4" x H 60 7/8"

LIST PRICE EACH: \$ 202.00

For Sheet Pan Racks

GBCTUPR (Vinyl)

L 32" x W 24" x H 66"

LIST PRICE EACH: \$ 204.00

inStock item

GBIRC272162 (Insulated)

L 27 1/2" x W 21 1/2" x H 62"

LIST PRICE EACH: \$ 700.00



CA PROP 65